



Plainville USD 270

203 SE Cardinal, Plainville, KS 67663
 (785) 434-4678
 www.plainville270.net

System Accreditation Status: **Accredited**
 ESSA Annual Meaningful Differentiation: **2021 data not required**
 Grades: **PK-12,NG**
 Superintendent: **Lisa Gehring**

Demographics

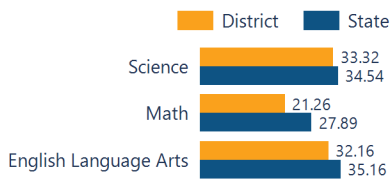


343 Students

- African American 2.04%
- Hispanic 2.04%
- Other 1.46%
- White 94.46%

Academically Prepared for Postsecondary Success

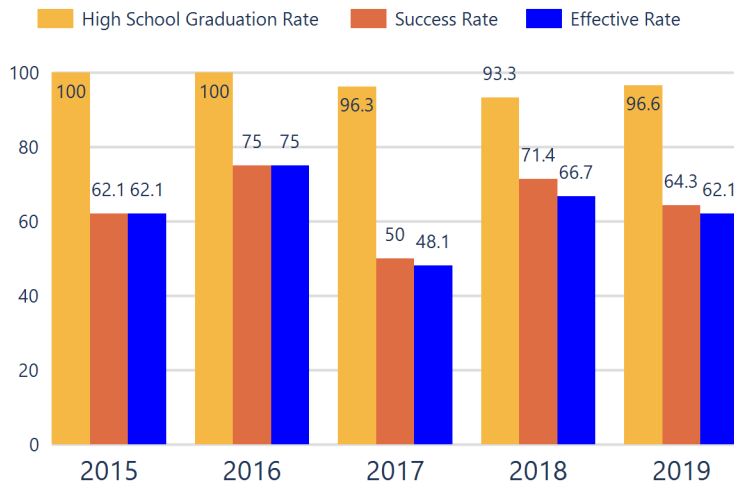
The percentage of students who scored at Levels 3 and 4 on the state assessment.



District Kansans Can Star Recognition

	Gold	Silver	Bronze	Copper
Social-Emotional Growth				
Kindergarten Readiness				
Individual Plan of Study				
Academically Prepared for Postsecondary				
Civic Engagement				
High School Graduation			★	
Postsecondary Success		★		

District Postsecondary Effectiveness



Kansans CAN lead the world!
Graduation
95%
 Effective Rate 70-75%

Five-Year Graduation Avg
96.8%

Five-Year Success Avg
65.4%

Five-Year Effective Avg
63.3%

95% Confidence Interval for the Predicted Effectiveness Rate
40.3 - 48.2%

- The numerator and denominator in the Five-Year Averages contain total student counts over five years (2015-2019) and are rounded to the nearest whole number.
- Graduation Rate:** The 4-year adjusted cohort graduation rate is the number of students who graduate in four years with a regular high school diploma divided by the number of students who entered high school as 9th graders four years earlier (adjusting for transfers in and out).
 - Success Rate:** A student must meet one of the four following outcomes within two years of High School graduation.
 - Student earned an Industry Recognized Certification while in High School.
 - Student earned a Postsecondary Certificate.
 - Student earned a Postsecondary Degree.
 - Student enrolled in Postsecondary in both the first and second year following High School graduation.
 - Effective Rate:** The calculated Graduation Rate multiplied by the calculated Success Rate.

GRADUATION RATE

The four-year adjusted cohort graduation rate is the percentage of students in a cohort, adjusted for transfers into and out of the school, district, or state, who graduate with a regular high school diploma within four years of entering high school.

100.0%

State: **District ESSA Expenditures Per Pupil**

88.1

Expenditures reflect those for the normal day-to-day operation of schools as reported by the Local Education Agency. The following expenditures are excluded: capital outlay, school construction and building improvements, equipment and debt services.

\$10,390

ATTENDANCE RATE

Rate at which students are present at school, not including excused or unexcused absences.

94.1%

State: 93.8

[Click here for State Financial Accountability.](#)

State: \$12,863

CHRONIC ABSENTEEISM

Percentage of students who miss 10% or more of school days per year either with or without a valid excuse.

17.6%

State: 17.5

DROPOUT RATE

The dropout rate is calculated annually and reflects the number of seventh–twelfth grade students who drop out in any one school year. A dropout is any student who exits school between October 1 and September 30 with a dropout EXIT code AND does not re-enroll in school by September 30.

N/A

State: 1.7



District Academic Success

State Assessment scores are displayed by student subgroup over three years time in three subjects: Math, English Language Arts (ELA), and Science. Assessment scores are not available for the 2020 school year.

Academically Prepared for Postsecondary Success

ALL STUDENTS

	2018-19			2019-20			2020-21		
	Math	ELA	Sci	Math	ELA	Sci	Math	ELA	Sci
Level 1	23.16	29.37	35.16	N/A	N/A	N/A	32.75	29.23	41.33
Level 2	45.76	36.72	37.36	N/A	N/A	N/A	45.97	38.59	25.33
Level 3	24.85	25.42	24.17	N/A	N/A	N/A	17.24	25.73	22.66
Level 4	6.21	8.47	3.29	N/A	N/A	N/A	4.02	6.43	10.66

FREE AND REDUCED LUNCH STUDENTS

	2018-19			2019-20			2020-21		
	Math	ELA	Sci	Math	ELA	Sci	Math	ELA	Sci
Level 1	30.58	42.35	47.50	N/A	N/A	N/A	51.61	40.00	46.42
Level 2	47.05	36.47	37.50	N/A	N/A	N/A	30.64	35.00	21.42
Level 3	16.47	12.94	15.00	N/A	N/A	N/A	16.12	20.00	25.00
Level 4	5.88	8.23	0.00	N/A	N/A	N/A	1.61	5.00	7.14

STUDENTS WITH DISABILITIES

	2018-19			2019-20			2020-21		
	Math	ELA	Sci	Math	ELA	Sci	Math	ELA	Sci
Level 1	60.86	69.56	N/A	N/A	N/A	N/A	70.00	82.35	N/A
Level 2	26.08	17.39	N/A	N/A	N/A	N/A	25.00	11.76	N/A
Level 3	8.69	13.04	N/A	N/A	N/A	N/A	5.00	0.00	N/A
Level 4	4.34	0.00	N/A	N/A	N/A	N/A	0.00	5.88	N/A

AFRICAN-AMERICAN STUDENTS

	2018-19			2019-20			2020-21		
	Math	ELA	Sci	Math	ELA	Sci	Math	ELA	Sci
Level 1	N/A	N/A	N/A	N/A	N/A	N/A	N/A	N/A	N/A
Level 2	N/A	N/A	N/A	N/A	N/A	N/A	N/A	N/A	N/A
Level 3	N/A	N/A	N/A	N/A	N/A	N/A	N/A	N/A	N/A
Level 4	N/A	N/A	N/A	N/A	N/A	N/A	N/A	N/A	N/A

HISPANIC STUDENTS

	2018-19			2019-20			2020-21		
	Math	ELA	Sci	Math	ELA	Sci	Math	ELA	Sci
Level 1	N/A	N/A	N/A	N/A	N/A	N/A	N/A	N/A	N/A
Level 2	N/A	N/A	N/A	N/A	N/A	N/A	N/A	N/A	N/A
Level 3	N/A	N/A	N/A	N/A	N/A	N/A	N/A	N/A	N/A
Level 4	N/A	N/A	N/A	N/A	N/A	N/A	N/A	N/A	N/A

N/A: To protect student privacy, when a subgroup has fewer than 10 students, the data are not displayed.

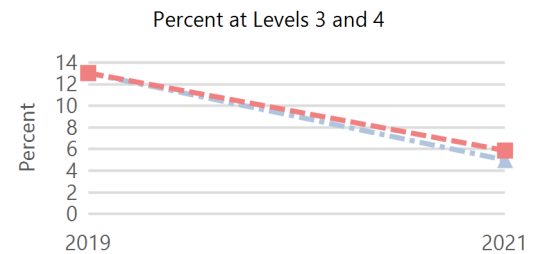
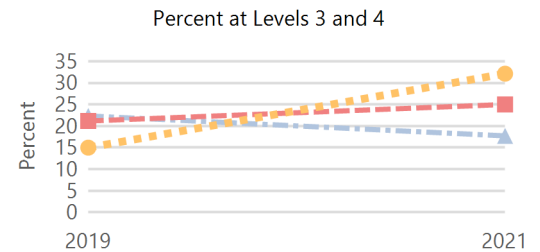
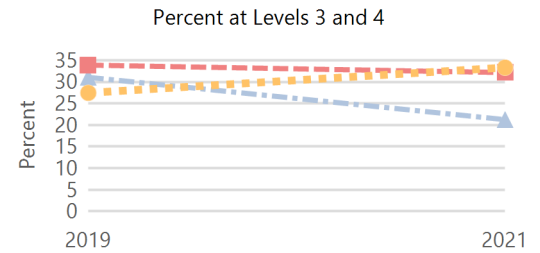
ACT Performance (2021 School Year)

ACT is a national college admissions exam that includes subject level tests in English, Math, Reading and Science. Students receive scores that range from 1 to 36 on each subject and an overall Composite score. This report provides the average Composite score for the 2021 graduating seniors who took the ACT as sophomores, juniors, or seniors.

Note: Not all eligible students completed an ACT.

District	18.9
State	19.8

Legend
 ---+--- Math ---+--- ELA ---+--- Science



Percent at Levels 3 and 4
 *To protect student privacy, when a subgroup has fewer than 10 students the data are not displayed. Assessment scores are not available for the 2020 school year.

Percent at Levels 3 and 4
 *To protect student privacy, when a subgroup has fewer than 10 students the data are not displayed. Assessment scores are not available for the 2020 school year.